

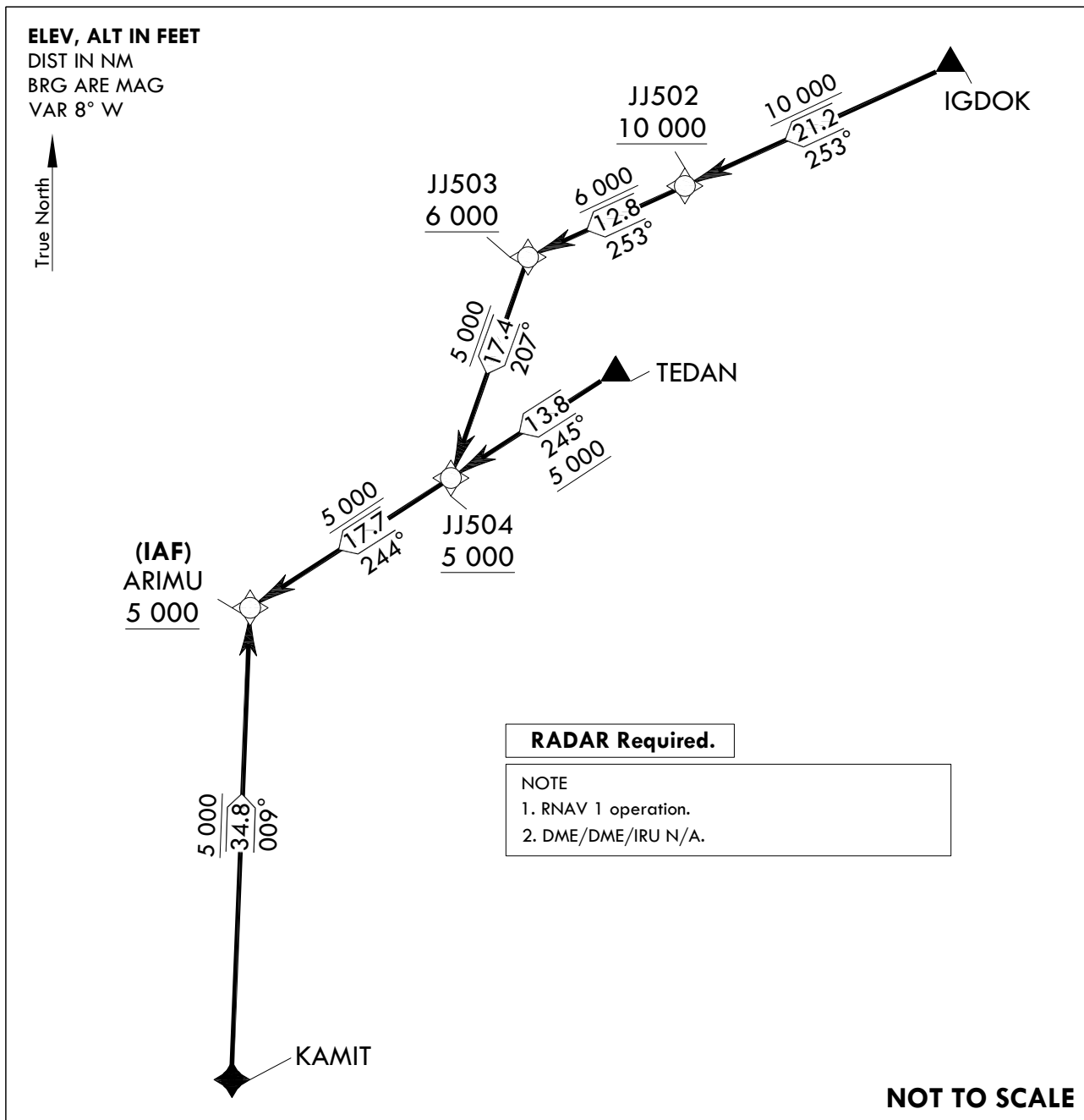
**STANDARD ARRIVAL CHART
INSTRUMENT(STAR)**

TRANSITION ALT 14 000
TRANSITION LVL FL 140

GWANGJU APP 130.0
228.9
GWANGJU TWR 118.05
254.6

GWANGJU/Gwangju(RKJJ)
RWY 04L/R
RNAV ARIMU 1

Note : Arrival under U.S. TERPS.



ARRIVAL ROUTE DESCRIPTION

LANDING RUNWAY 04L/04R : Expect RNP approach following transition routes.

The following are transition routes.

IGDOK transition : From IGDOK on track 253° to JJ502 at or above 10 000 ft, then track 253° to JJ503 at or above 6 000 ft, then track 207° to JJ504 at or above 5 000 ft, then track 244° to ARIMU at or above 5 000 ft.

TEDAN transition : From TEDAN on track 245° to JJ504 at or above 5 000 ft, then track 244° to ARIMU at or above 5 000 ft.

KAMIT transition : From KAMIT on track 009° to ARIMU at or above 5 000 ft.

Change : Information of IGDOK, TEDAN, KAMIT(reporting requirement) and ARIMU(IAF).

GWANGJU/Gwangju(RKJJ)

RWY 04L/R

RNAV ARIMU 1

AERONAUTICAL DATA TABULATION

Standard Instrument Arrival Procedure Coding Tables

RNAV ARIMU 1 - IGDKOK Transition

Serial Number	Path Descriptor	Waypoint Identifier	Fly-over	Course/Track °M(°T)	Distance (NM)	Turn direction	Altitude (ft)	Speed (kt)	Coordinates	VPA/ RDH	Navigation specification	Remarks
001	TF	IGDKOK	-	-	-	-	-	-	35°31'03.6"N 127°49'06.6"E	-	RNAV 1	-
002	TF	JJ502	-	253 (244.9)	21.2	-	+10 000	-	35°22'00.0"N 127°25'35.7"E	-	RNAV 1	Outside of 30 NM ARP
003	TF	JJ503	-	253 (244.7)	12.8	-	+6 000	-	35°16'31.0"N 127°11'29.8"E	-	RNAV 1	-
004	TF	JJ504	-	207 (198.2)	17.4	-	+5 000	-	35°00'00.4"N 127°04'53.5"E	-	RNAV 1	-
005	TF	ARIMU	-	244 (236.0)	17.7	-	+5 000	-	34°50'03.9"N 126°47'02.3"E	-	RNAV 1	IAF

RNAV ARIMU 1 - TEDAN Transition

Serial Number	Path Descriptor	Waypoint Identifier	Fly-over	Course/Track °M(°T)	Distance (NM)	Turn direction	Altitude (ft)	Speed (kt)	Coordinates	VPA/ RDH	Navigation specification	Remarks
001	TF	TEDAN	-	-	-	-	-	-	35°07'43.8"N 127°18'52.1"E	-	RNAV 1	-
002	TF	JJ504	-	245 (236.2)	13.8	-	+5 000	-	35°00'00.4"N 127°04'53.5"E	-	RNAV 1	-
003	TF	ARIMU	-	244 (236.0)	17.7	-	+5 000	-	34°50'03.9"N 126°47'02.3"E	-	RNAV 1	IAF

RNAV ARIMU 1 - KAMIT Transition

Serial Number	Path Descriptor	Waypoint Identifier	Fly-over	Course/Track °M(°T)	Distance (NM)	Turn direction	Altitude (ft)	Speed (kt)	Coordinates	VPA/ RDH	Navigation specification	Remarks
001	TF	KAMIT	-	-	-	-	-	-	34°15'14.1"N 126°46'17.7"E	-	RNAV 1	-
002	TF	ARIMU	-	009 (001.0)	34.8	-	+5 000	-	34°50'03.9"N 126°47'02.3"E	-	RNAV 1	IAF

Change : Information of remarks for ARIMU.

**STANDARD ARRIVAL CHART
INSTRUMENT(STAR)**

TRANSITION ALT 14 000
TRANSITION LVL FL 140

GWANGJU APP 130.0
228.9
GWANGJU TWR 118.05
254.6

GWANGJU/Gwangju(RKJJ)
RWY 04L/R
RNAV XEMIX 1

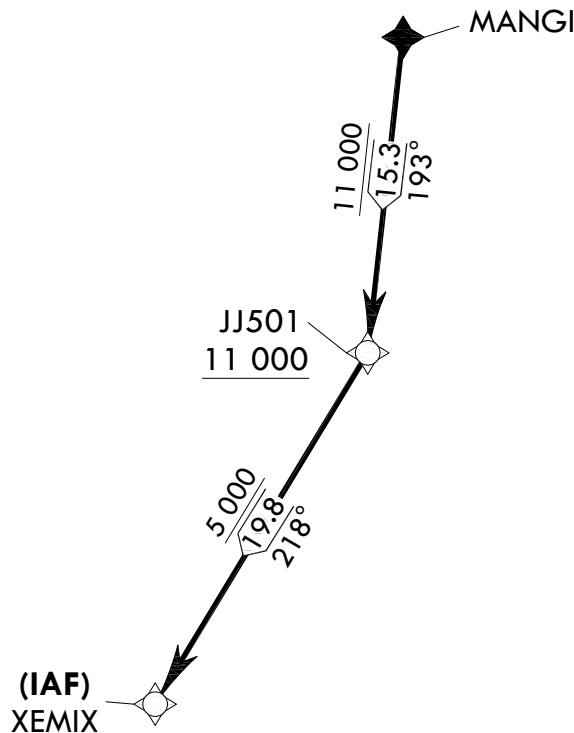
Note : Arrival under U.S. TERPS.

ELEV, ALT IN FEET

DIST IN NM

BRG ARE MAG

VAR 8° W



RADAR Required.

NOTE

1. RNAV 1 operation.
2. DME/DME/IRU N/A.

NOT TO SCALE

ARRIVAL ROUTE DESCRIPTION

LANDING RUNWAY 04L/04R : Expect RNP approach following transition routes.

The following is transition route.

MANGI transition : From MANGI on track 193° to JJ501 at or above 11 000 ft,
then track 218° to XEMIX at or above 5 000 ft.

Standard Instrument Arrival Procedure Coding Tables

RNAV XEMIX 1 - MANGI Transition										
Serial Number	Path Descriptor	Waypoint Identifier	Fly-over	Course/Track °M(°T)	Distance (NM)	Turn direction	Altitude (ft)	Speed (kt)	Coordinates	VPA/ RDH
001	TF	MANGI	-	-	-	-	-	-	35°30'11.3"N 126°44'31.7"E	-
002	TF	JJ501	-	193 (185.0)	15.3	-	+11 000	-	35°14'54.0"N 126°42'53.6"E	-
003	TF	XEMIX	-	218 (209.9)	19.8	-	+5 000	-	34°57'41.4"N 126°30'53.8"E	-
										Navigation specification
										Remarks
										-
										-
										IAF

**STANDARD ARRIVAL CHART
INSTRUMENT(STAR)**

TRANSITION ALT 14 000
TRANSITION LVL FL 140

GWANGJU APP 130.0
228.9
GWANGJU TWR 118.05
254.6

GWANGJU/Gwangju(RKJJ)
RWY 22L/R
RNAV ORUSA 1

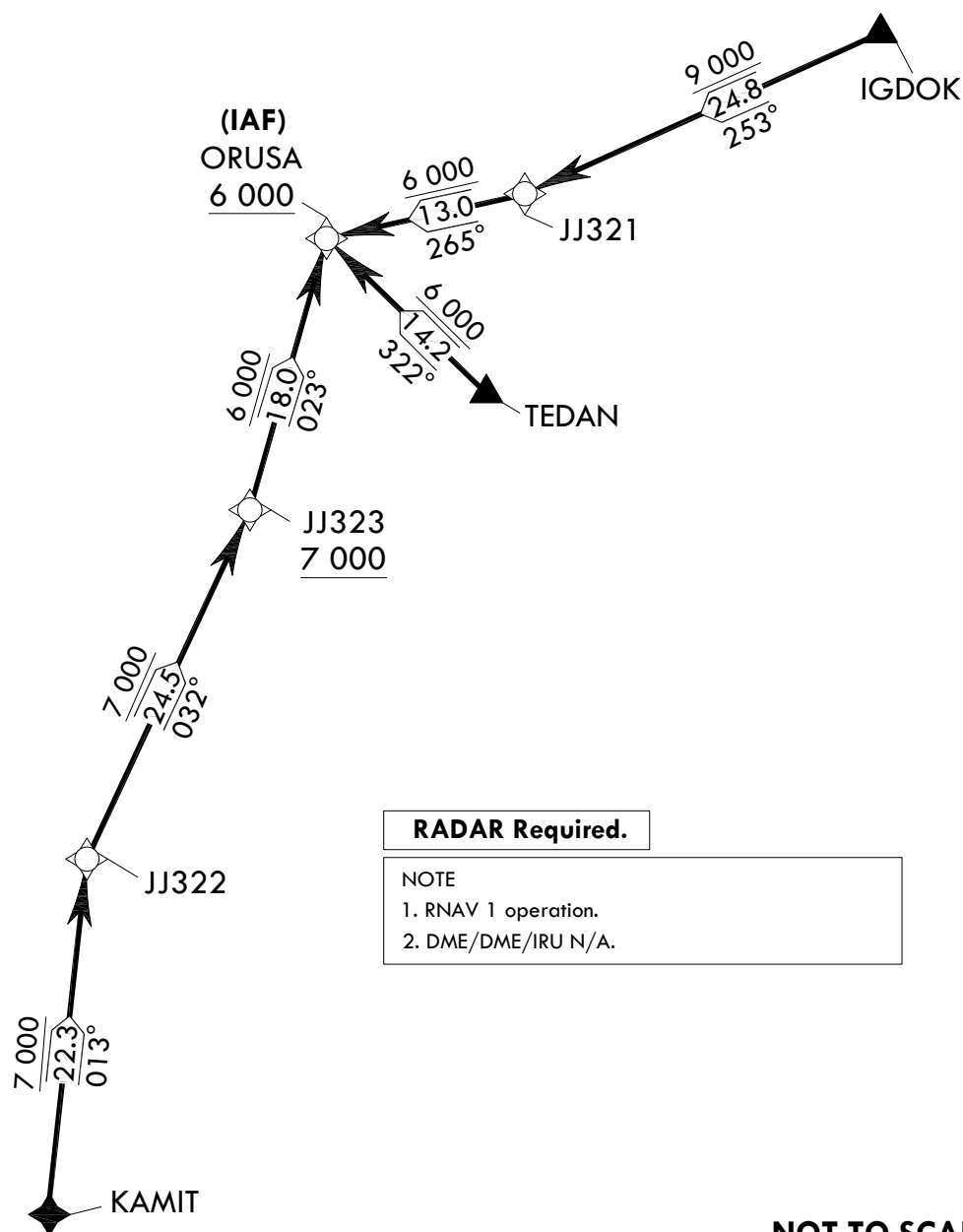
Note : Arrival under U.S. TERPS.

ELEV, ALT IN FEET

DIST IN NM

BRG ARE MAG

VAR 8° W



RADAR Required.

NOTE

1. RNAV 1 operation.
2. DME/DME/IRU N/A.

NOT TO SCALE

ARRIVAL ROUTE DESCRIPTION

LANDING RUNWAY 22L/22R : Expect RNP approach following transition routes.

The following are transition routes.

IGDOK transition : From IGDOK on track 253° to JJ321 at or above 9 000 ft,
then track 265° to ORUSA at or above 6 000 ft.

TEDAN transition : From TEDAN on track 322° to ORUSA at or above 6 000 ft.

KAMIT transition : From KAMIT on track 013° to JJ322 at or above 7 000 ft, then track 032° to JJ323
at or above 7 000 ft, then track 023° to ORUSA at or above 6 000 ft.

GWANGJU/Gwangju(RKJJ)
RWY 22L/R
RNAV ORUSA 1

AERONAUTICAL DATA TABULATION

Standard Instrument Arrival Procedure Coding Tables

RNAV ORUSA 1 - IGDKOK Transition

Serial Number	Path Descriptor	Waypoint Identifier	Fly-over	Course/Track °M(°T)	Distance (NM)	Turn direction	Altitude (ft)	Speed (kt)	Coordinates	VPA/ RDH	Navigation specification	Remarks
001	TF	IGDKOK	-	-	-	-	-	-	35°31'03.6"N 127°49'06.6"E	-	RNAV 1	-
002	TF	JJ321	-	253 (244.9)	24.8	-	+9 000	-	35°20'27.5"N 127°21'37.3"E	-	RNAV 1	-
003	TF	ORUSA	-	265 (256.5)	13.0	-	+6 000	-	35°17'25.0"N 127°06'14.5"E	-	RNAV 1	IAF

RNAV ORUSA 1 - TEDAN Transition

Serial Number	Path Descriptor	Waypoint Identifier	Fly-over	Course/Track °M(°T)	Distance (NM)	Turn direction	Altitude (ft)	Speed (kt)	Coordinates	VPA/ RDH	Navigation specification	Remarks
001	TF	TEDAN	-	-	-	-	-	-	35°07'43.8"N 127°18'52.1"E	-	RNAV 1	-
002	TF	ORUSA	-	322 (313.1)	14.2	-	+6 000	-	35°17'25.0"N 127°06'14.5"E	-	RNAV 1	IAF

RNAV ORUSA 1 - KAMIT Transition

Serial Number	Path Descriptor	Waypoint Identifier	Fly-over	Course/Track °M(°T)	Distance (NM)	Turn direction	Altitude (ft)	Speed (kt)	Coordinates	VPA/ RDH	Navigation specification	Remarks
001	TF	KAMIT	-	-	-	-	-	-	34°15'14.1"N 126°46'17.7"E	-	RNAV 1	-
002	TF	JJ322	-	013 (005.0)	22.3	-	+7 000	-	34°37'31.6"N 126°48'40.2"E	-	RNAV 1	-
003	TF	JJ323	-	032 (023.8)	24.5	-	+7 000	-	35°00'00.3"N 127°00'41.7"E	-	RNAV 1	-
004	TF	ORUSA	-	023 (014.6)	18.0	-	+6 000	-	35°17'25.0"N 127°06'14.5"E	-	RNAV 1	IAF

Change : Information of remarks for ORUSA.